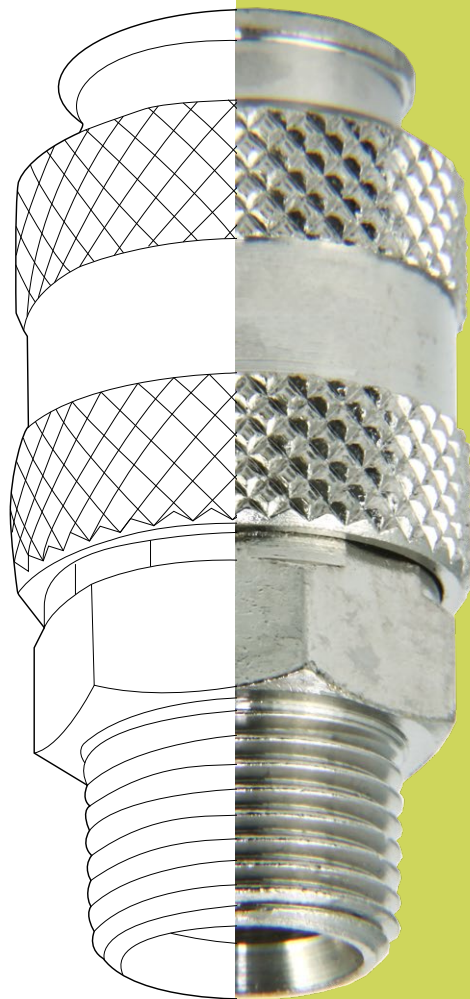
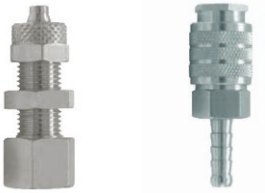


QUICK COUPLING FOR COMPRESSED AIR



TECHNICAL INDEX



P. 407 /
MINI SERIES



P. 413 /
TIERRE UNIVERSAL SERIES



P. 419 /
USA SERIES



P. 423 /
SWISS SERIES



P. 427 /
GERMANY SERIES



P. 433 /
ITALY SERIES



P. 439 /
LARGE ITALY SERIES



P. 443 /
JAPAN SERIES



QUICK COUPLING FOR COMPRESSED AIR

MINI SERIES

PLUS

**EASY CONNECTION
AND DISCONNECTION**

STRONG AND COMPACT

**SUITABLE FOR PNUMATICS
APPLICATIONS**

**COMPATIBLE WITH SWISS, ITALY, USA
AND GERMANY**





p. 409 / **8110FM**



p. 409 / **8120FF**



p. 409 / **8130RE**



p. 410 / **8140CA**



p. 410 / **8150MO**



p. 410 / **8155BU**



p. 410 / **8160MM**



p. 410 / **8170FM**



p. 411 / **8180RE**

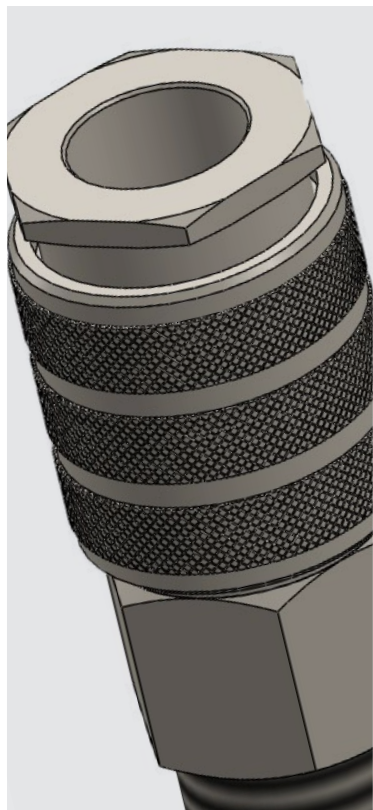


p. 411 / **8190CA**



p. 411 / **8195MO**





-15°C ÷ +80°C



Up to 12 Bar

NOMINAL DIAMETER

4,8 mm



Compressed air

Parallel gas BSPP ISO 228 from
G1/8" to G1/2"**PROFILE**Products in compliance with
the directive 2002/95/EC**RoHS2**Products in compliance with
the directive 2011/65/EU**8110FM**

Male quick coupler



CODE	T	L	H
8110FM01	R1/8"	38,9	14
8110FM02	R1/4"	37,7	14

8120FF

Female quick coupler



CODE	T	L	H
8120FF01	G1/8"	38,9	14
8120FF02	G1/4"	40,7	15

8130RE

Hose connector quick coupler



CODE	D	L	H
8130RE06	6	49	33,0
8130RE08	8	49	35,0



8140CA

Push-on quick coupler



CODE	D	L	H
8140CA46	4X6	42,9	14
8140CA68	6X8	43,6	14
8140CA810	8X10	45,0	14

8150MO

Quick coupler with spring



CODE	D	L	H1	H2
8150MO46	4X6	115,6	14	12
8150MO68	6X8	128,3	14	13
8150MO810	8X10	129,2	14	15

8155BU

Bulkhead quick coupler



CODE	D	L	H	GR.
8155BU46	4X6	57,7	14	33,0
8155BU68	6X8	58,0	-	35,0

8160MM

Male connection



CODE	T	L	H
8160MM01	R1/8"	26,0	12
8160MM02	R1/4"	28,4	14

8170FM

Female connection



CODE	T	L	H
8170FM01	R1/8"	26,0	12
8170FM02	R1/4"	28,4	14



8180RE

Connection with barb connector



CODE	D	L
8180RE06	6	33,0
8180RE08	8	34,5

8190CA

Push-on connection



CODE	D	L	H
8190CA46	4X6	32,5	12
8190CA68	6X8	33,1	12
8190CA810	8X10	34,7	14

8195MO

Connection with spring



CODE	D	L	H1	H2
8195MO46	4X6	104,3	12	12
8195MO68	6X8	117,0	12	12
8195MO810	8X10	120,4	14	15





**QUICK
COUPLING FOR
COMPRESSED
AIR**
TIERRE UNIVERSAL
SERIES

PLUS

**EASY CONNECTION
AND DISCONNECTION**

**SUITABLE FOR PNEUMATIC
APPLICATIONS**

**COMPATIBLE WITH SWISS, ITALY, USA
AND GERMANY**





p. 416 / **8410FM**



p. 416 / **8420FF**



p. 416 / **8430RE**



p. 416 / **8440PO**



p. 417 / **8450MO**

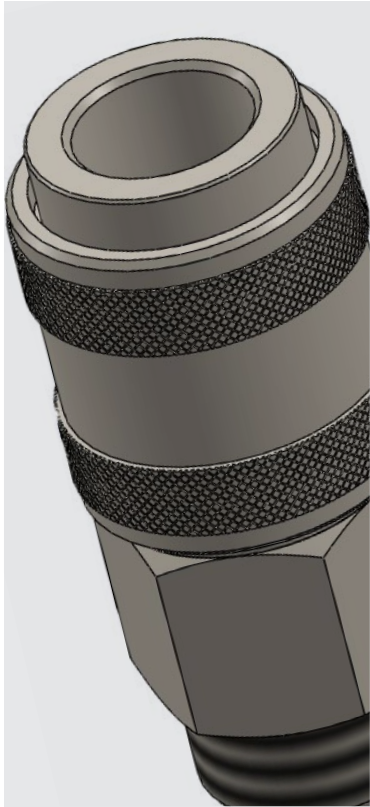


p. 417 / **8410FM-LU**




p. 417 / **8420FF-LU**







 -15°C ÷ +80°C

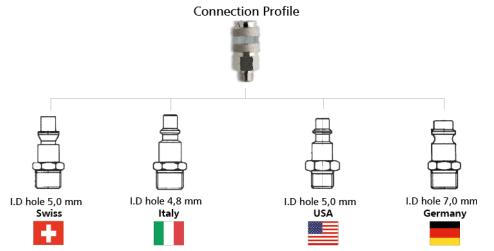
 from 0 to 16 Bar

FLOW
 2100 l/m at 6 Bar
 1500 l/m at 6 bar
 (8410FM-LU AND 8420FF-LU)

 Parallel gas
 from G1/8" to G1/2"

 Brass with stainless steel spheres

PROFILE

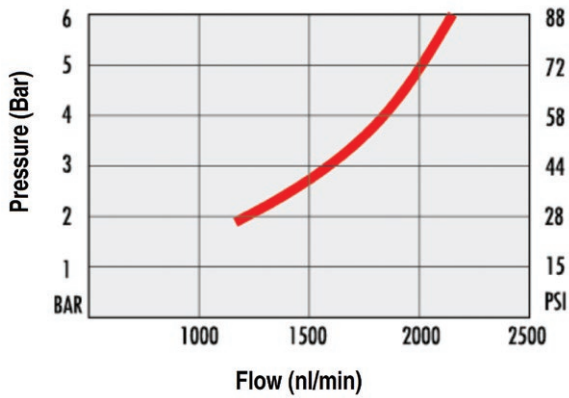


 **REACH**
 Products in compliance with the directive 2002/95/EC

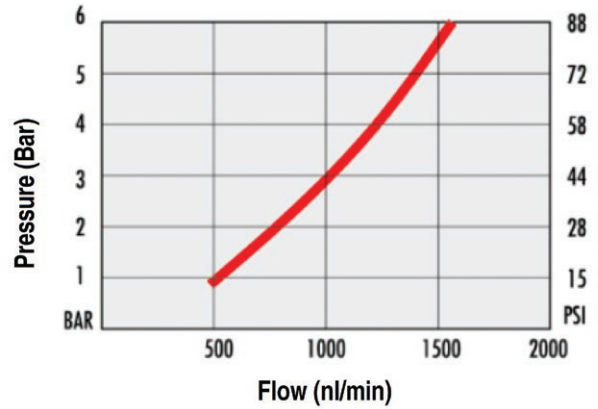
RoHS2

Products in compliance with the directive 2011/65/EU

TIERRE UNIVERSAL SERIES

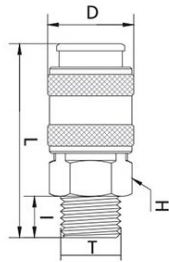


TIERRE LIGHT UNIVERSAL SERIES



8410FM

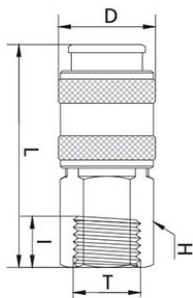
Male quick coupler



CODE	T	I	D	L	H
8410FM02	G1/4"	11,0	24,0	58,0	20
8410FM03	G3/8"	11,5	24,0	54,0	20
8410FM04	G1/2"	14,0	24,0	56,5	22

8420FF

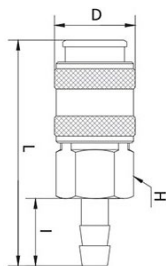
Female quick coupler



CODE	T	I	D	L	H
8420FF02	G1/4"	11,0	24,0	55,0	20
8420FF03	G3/8"	12,0	24,0	55,0	20
8420FF04	G1/2"	14,0	28,0	55,0	25

8430RE

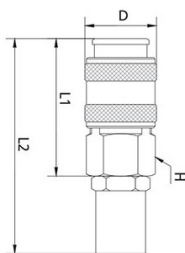
Barb connector quick coupler



CODE	Ø	I	D	L	H
8430RE06	6	20,0	24,0	67,0	20
8430RE08	8	20,0	24,0	67,0	20
8430RE10	10	20,0	24,0	67,0	20
8430RE12	12	24,0	24,0	71,0	20

8440PO

Hose connector quick coupler

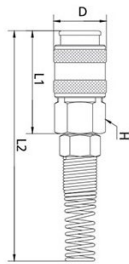


CODE	Ø	D	L1	L2	H
8440PO610	6X10	24,0	47,0	73,0	20
8440PO612	6X12	24,0	47,0	73,0	20
8440PO614	6X14	24,0	47,0	73,0	20
8440PO812	8X12	24,0	47,0	73,5	20
8440PO814	8X14	24,0	47,0	73,5	20
8440PO817	8X17	24,0	47,0	73,5	20
8440PO10145	10X14,5	24,0	47,0	73,5	20
8440PO1017	10X17	24,0	47,0	73,5	20
8440PO1019	10X19	24,0	47,0	77,0	20



8450MO

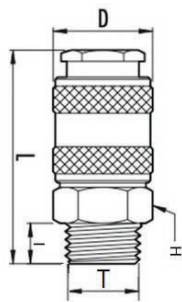
Hose connector quick coupler



CODE	Ø	D	L1	L2	H
8450MO58	5X8	24,0	47,0	148,0	20
8450MO68	6X8	24,0	47,0	148,0	20
8450MO810	8X10	24,0	47,0	148,0	20
8450MO6510	6,5X10	24,0	47,0	148,0	20
8450MO812	8X12	24,0	42,5	160,0	20
8450MO1012	10X12	24,0	42,5	160,0	20

8410FM-LU

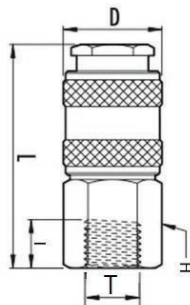
Male quick coupler BSPP



CODE	T	I	D	L	H
8410FM02LU	G1/4"	9	22	52	19
8410FM03LU	G3/8"	9	22	47,5	19
8410FM04LU	G1/2"	10,5	22	48,5	22

8420FF-LU

Female quick coupler BSPP



CODE	T	I	D	L	H
8420FF02LU	G1/4"	11	22	52,5	19
8420FF03LU	G3/8"	12	22	52,5	19





**QUICK
COUPLING FOR
COMPRESSED
AIR**
USA SERIES

PLUS

**EASY CONNECTION
AND DISCONNECTION**

**SUITABLE FOR PNEUMATIC
APPLICATIONS**





p. 421 / **8060MM**



p. 421 / **8070FM**



p. 422 / **8080RE**

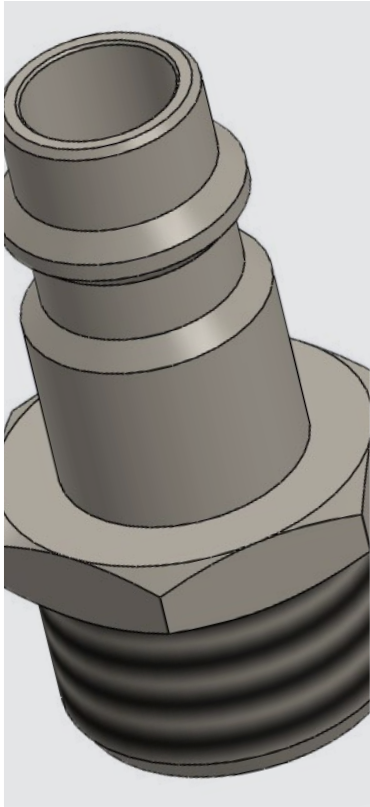


p. 422 / **8085PO**



p. 422 / **8090MO**





-15°C ÷ +80°C



Up to 16 Bar

NOMINAL DIAMETER
5,0 mm



Compressed air



Parallel gas BSPP ISO 228 from G1/8" to G1/2"

PROFILE



Products in compliance with the directive 2002/95/EC

RoHS2

Products in compliance with the directive 2011/65/EU

8060MM

Male connection



CODE	T
8060MM02	G1/4"
8060MM03	G3/8"
8060MM04	G1/2"

8070FM

Female connection



CODE	T
8070FM02	G1/4"
8070FM03	G3/8"
8070FM04	G1/2"



8080RE

Connection with barb connector



CODE	Ø
8080RE06	6
8080RE08	8
8080RE10	10
8080RE12	12

8085PO

Connection with hose connector



CODE	Ø
8085PO610	6X10
8085PO612	6X12
8085PO614	6X14
8085PO812	8X12
8085PO814	8X14
8085PO817	8X17
8085PO10145	10X14,5
8085PO1017	10X17
8085PO1019	10X19

8090MO

Connection with spring



CODE	Ø
8090MO46	4X6
8090MO58	5X8
8090MO68	6X8
8090MO810	8X10
8090MO6510	6,5X10
8090MO812	8X12
8090MO1012	10X12



**QUICK
COUPLING FOR
COMPRESSED
AIR**
SWISS SERIES

PLUS

**EASY CONNECTION
AND DISCONNECTION**

**SUITABLE FOR PNEUMATIC
APPLICATIONS**





p. 425 / **8460MM**



p. 425 / **8470FM**



p. 426 / **8480RE**

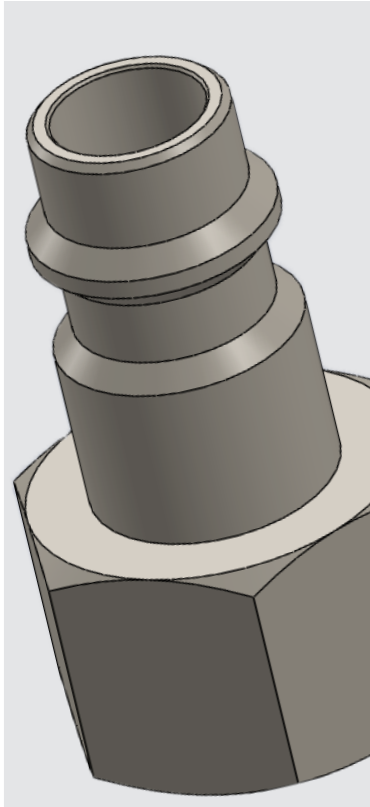


p. 426 / **8485PO**



p. 426 / **8490MO**





-15°C ÷ +80°C



Up to 16 Bar

NOMINAL DIAMETER
5,0 mm



Compressed air



Parallel gas BSPP ISO 228
from G 1/4" to G 1/2"

PROFILE



Products in compliance with
the directive 2002/95/EC

RoHS2

Products in compliance with
the directive 2011/65/EU

8460MM

Male connection



CODE	T
8460MM02	G1/4"
8460MM03	G3/8"
8460MM04	G1/2"

8470FM

Female connection



CODE	T
8470FM02	G1/4"
8470FM03	G3/8"
8470FM04	G1/2"



8480RE

Connection with barb connector



CODE	Ø
8480RE06	6
8480RE08	8
8480RE10	10
8480RE12	12

8485PO

Connection with hose connector



CODE	Ø
8485PO610	6X10
8485PO612	6X12
8485PO614	6X14
8485PO812	8X12
8485PO814	8X14
8485PO817	8X17
8485PO10145	10X14,5
8485PO1017	10X17
8485PO1019	10X19

8490MO

Connection with spring



CODE	Ø
8490MO46	4X6
8490MO58	5X8
8490MO68	6X8
8490MO810	8X10
8490MO6510	6,5X10
8490MO812	8X12
8490MO1012	10X12



**QUICK
COUPLING FOR
COMPRESSED
AIR**
GERMANY SERIES

PLUS

**EASY CONNECTION
AND DISCONNECTION**

**SUITABLE FOR PNEUMATIC
APPLICATIONS**





p. 429 / **8310FM**



p. 429 / **8320FF**



p. 430 / **8330RE**



p. 430 / **8390PO**



p. 430 / **8350MO**



p. 430 / **8360MM**



p. 431 / **8370FM**



p. 431 / **8340PO**

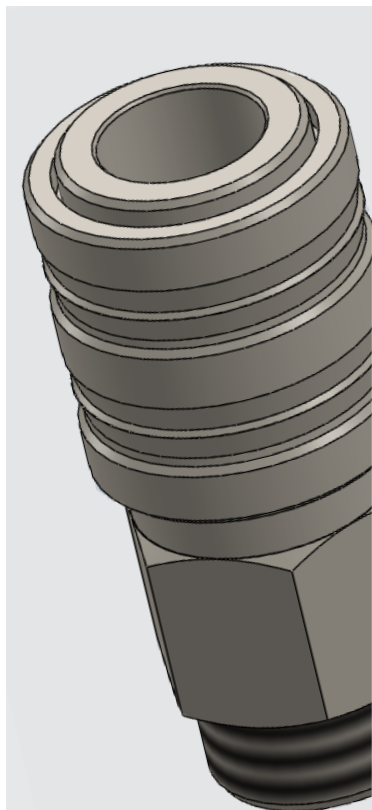


p. 431 / **8380RE**



p. 431 / **8395MO**





-15°C ÷ +80°C



Up to 8 Bar

NOMINAL DIAMETER

7,0 mm

FLOW

2000 l/min



Compressed air



Taper gas from R1/4" to R1/2"
Parallel gas from G1/4" to G1/2"

PROFILE



Products in compliance with
the directive 2002/95/EC

RoHS2

Products in compliance with
the directive 2011/65/EU

8310FM

Male quick coupler



CODE	T	L	H
8310FM02	R1/4"	51,5	19
8310FM03	R3/8"	51,5	19
8310FM04	R1/2"	54,5	22

8320FF

Female quick coupler



CODE	T	L	H
8320FF02	G1/4"	51,4	19
8320FF03	G3/8"	57,0	19
8320FF04	G1/2"	54,3	25



8330RE

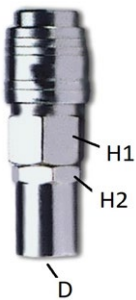
Barb connector quick coupler



CODE	D	L	H
8330RE06	6	38,5	19
8330RE07	7	61,5	19
8330RE08	8	63,1	19
8330RE09	9	63,3	19
8330RE10	10	65,7	19
8330RE12	12	66,7	19
8330RE13	13	66,3	19

8390PO

Hose connector quick coupler



CODE	D	L	H1	H2
8390PO610	6X10	72,5	19	15
8390PO612	6X12	72,5	19	15
8390PO614	6X14	73,2	19	20
8390PO812	8X12	70,0	19	15
8390PO817	8X17	70,3	19	20
8390PO1019	10X19	76,4	19	20

8350MO

Quick coupler with spring



CODE	D	L	H1	H2
8350MO46	4X6	129,0	19	12
8350MO58	5X8	139,0	19	13
8350MO68	6X8	137,0	19	13
8350MO6510	6,5X10	140,0	19	15
8350MO810	8X10	139,5	19	15
8350MO1012	10X12	144,7	19	17

8360MM

Male connection



CODE	T	L	H
8360MM02	R1/4"	33,5	14
8360MM03	R3/8"	35,5	17
8360MM04	R1/2"	38,4	22



8370FM

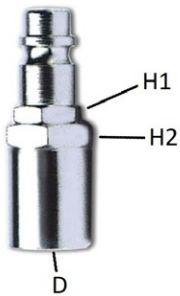
Female connection



CODE	T	L	H
8370FM02	G1/4"	33,1	15
8370FM03	G3/8"	35,0	19
8370FM04	G1/2"	38,0	25

8340PO

Connection with hose connector



CODE	D	L	H1	H2
8340PO1019	6X10	51,4	13	15
8340PO610	6X12	51,4	13	15
8340PO612	6X14	51,4	13	17
8340PO614	8X17	52,5	13	18
8340PO817	10X19	55,4	12	22

8380RE

Connection with barb connector



CODE	D	P
8380RE06	6	38,2
8380RE07	7	40,0
8380RE08	8	40,2
8380RE09	9	40,9
8380RE10	10	39,4
8380RE12	12	44,6
8380RE13	13	45,6

8395MO

Connection with barb connector



CODE	D	L	H1	H2
8395MO46	4X6	103,2	13	12
8395MO58	5X8	119,5	13	13
8395MO68	6X8	124,3	13	13
8395MO6510	6,5X10	120,5	13	15
8395MO810	8X10	123,2	13	15
8395MO1012	10X12	123,2	13	17





**QUICK
COUPLING FOR
COMPRESSED
AIR**
ITALY SERIES

PLUS

**EASY CONNECTION
AND DISCONNECTION**

STRONG

**SUITABLE FOR PNEUMATIC
APPLICATIONS**





p. 435 / **8210FM**



p. 435 / **8220FF**



p. 436 / **8240PO**



p. 436 / **8250MO**



p. 436 / **8260MO**



p. 436 / **8270FM**



p. 437 / **8230PO**

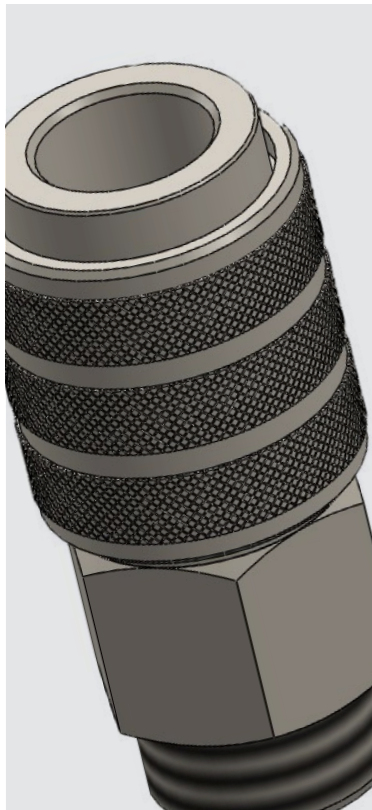


p. 437 / **8285BM**



p. 437 / **8295MO**





-15°C ÷ +80°C



Up to 8 Bar

NOMINAL DIAMETER

4,8 mm



Compressed air



Taper gas from R1/8" to R1/2"
Parallel gas from G1/8" to G1/2"

PROFILE



Products in compliance with
the directive 2002/95/EC

RoHS2

Products in compliance with
the directive 2011/65/EU

8210FM

Male quick coupler



CODE	T	L	H
8210FM01	R1/8"	51,9	19
8210FM02	R1/4"	52,1	19
8210FM03	R3/8"	52,2	19
8210FM04	R1/2"	55,5	22

8220FF

Male quick coupler



CODE	T	L	H
8220FF02	G1/4"	52,2	19
8220FF03	G3/8"	58,0	19
8220FF04	G1/2"	58,1	25



8240PO

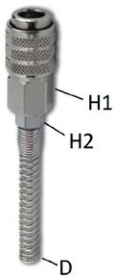
Hose connector quick coupler



CODE	ØD	L	H1	H2
8240PO610	6X10	70,5	19	15
8240PO612	6X12	72,0	19	15
8240PO613	6X13	70,5	19	16
8240PO614	6X14	70,5	19	17
8240PO716	7X16	73,2	19	19
8240PO812	8X12	70,5	19	15
8240PO813	8X13	70,5	19	15
8240PO815	8X15	70,5	19	15
8240PO817	8X17	71,1	19	20
8240PO1017	10X17	76,2	19	18
8240PO1019	10X19	77,8	19	20

8250MO

Quick coupler with spring



CODE	ØD	L	H1	H2
8250MO46	4X6	131,1	19	12
8250MO58	5X8	140,5	19	13
8250MO68	6X8	138,7	19	12
8250MO6510	6,5X10	140,0	19	15
8250MO810	8X10	144,3	19	15
8250MO1012	10X12	148,7	19	17

8260MM

Male connection



CODE	T	L	H
8260MM01	R1/8"	34,7	13
8260MM02	R1/4"	37,9	14
8260MM03	R3/8"	38,2	17
8260MM04	R1/2"	42,1	22

8270FM

Female connection



CODE	T	L	H
8270FM01	G1/8"	29,0	13
8270FM02	G1/4"	37,0	15
8270FM03	G3/8"	38,1	19
8270FM04	G1/2"	42,0	25



8230PO

Connection with hose connector



CODE	D	L	H1	H2
8230PO610	6X10	55,5	13	15
8230PO612	6X12	55,5	13	15
8230PO613	6X13	54,8	13	16
8230PO614	6X14	55,7	12	17
8230PO716	7X16	55,1	13	19
8230PO812	8X12	55,0	13	15
8230PO813	8X13	55,0	13	16
8230PO815	8X15	55,0	13	18
8230PO817	8X17	55,4	13	20
8230PO1017	10X17	57,9	13	20
8230PO1019	10X19	59,8	13	22

8285BM

Bayonet male connection



CODE	D	L	P
8285BM55	5,5	155,8	15

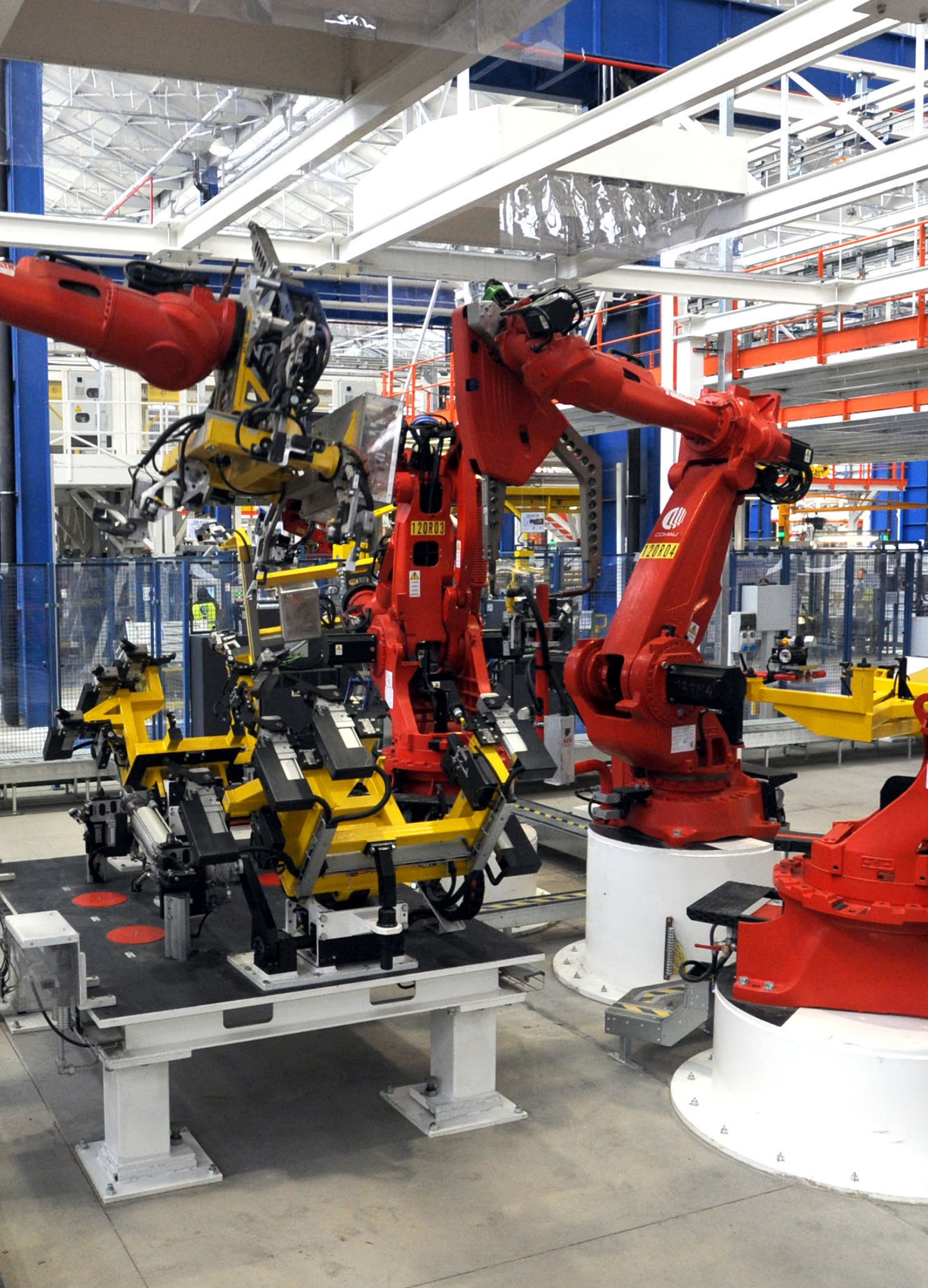
8295MO

Connection with spring



CODE	D	L	H1	H2
8295MO46	4X6	112,1	12	12
8295MO58	5X8	125,5	13	13
8295MO68	6X8	124,9	13	13
8295MO6510	6,5X10	126,0	12	15
8295MO810	8X10	123,7	13	15
8295MO812	8X12	125,5	15	17
8295MO1012	10X12	127,5	15	17





**QUICK
COUPLING FOR
COMPRESSED
AIR**
LARGE ITALY SERIES

PLUS

**EASY CONNECTION
AND DISCONNECTION**

STRONG

**SUITABLE FOR PNEUMATIC
APPLICATIONS**





p. 441 / **8215FM**



p. 441 / **8225FF**



p. 442 / **8235PO**

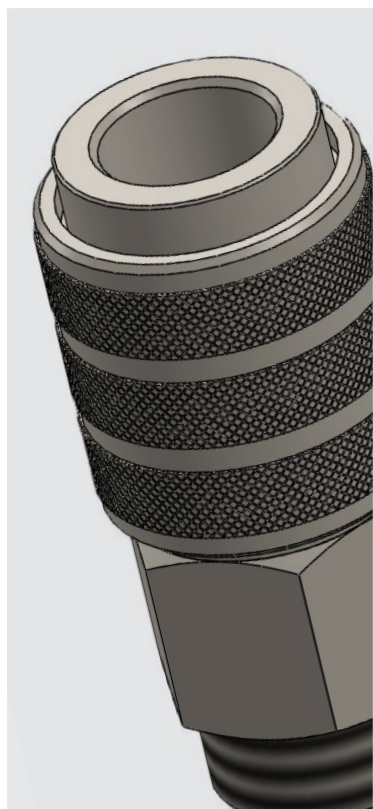


p. 442 / **8245PO**



p. 442 / **8255MM**





-15°C ÷ +80°C



Up to 8 Bar

NOMINAL DIAMETER

9,2 mm

FLOW

2500l/min



Compressed air



Taper gas from R3/8" to R1/2"
Parallel gas from G3/8" to G1/2"

PROFILE



Products in compliance with the directive 2002/95/EC

RoHS2

Products in compliance with the directive 2011/65/EU

8215FM

Large male quick coupler



CODE	T	L	H
8215FM03	R3/8"	62,5	26
8215FM04	R1/2"	65,0	26

8225FF

Large female quick coupler

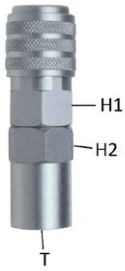


CODE	T	L	H
8225FF03	G3/8"	62,0	26
8225FF04	G1/2"	65,0	26



8235PO

Large quick coupler with hose connector



CODE	D	L	H1	H2
8235PO1019	10X19	80,0	22	25
8235PO1021	10X21	80,0	22	25
8235PO1023	10X23	81,0	22	27
8235PO1319	13X19	82,0	22	25
8235PO1320	13X20	82,0	22	25
8235PO1321	13X21	82,0	22	25
8235PO1323	13X23	82,0	22	27
8235PO1325	13X25	82,0	22	30

8245PO

Large connection with hose connector



CODE	D	L	H1	H2	GR.
8245PO1019	10X19	95,0	26	25	130,0
8245PO1021	10X21	96,0	26	25	132,0
8245PO1023	10X23	96,0	26	27	138,0
8245PO1319	13X19	97,5	26	25	137,0
8245PO1320	13X20	97,5	26	25	138,0
8245PO1321	13X21	97,5	26	25	138,0
8245PO1323	13X23	97,5	26	27	145,0
8245PO1324	13X24	97,5	26	27	-
8245PO1325	13X25	97,5	26	30	171,0

8255MM

Large male connection



CODE	T	L	H
8255MM03	R3/8"	47,5	19
8255MM04	R1/2"	50,5	22



**QUICK
COUPLING FOR
COMPRESSED
AIR**
JAPAN SERIES

PLUS

**EASY CONNECTION
AND DISCONNECTION**

STRONG

**SUITABLE FOR PNEUMATIC
APPLICATIONS**





p. 446 / **8910FM**



p. 446 / **8920FF**



p. 446 / **8930RE**



p. 446 / **8960MM**



p. 447 / **8970FM**

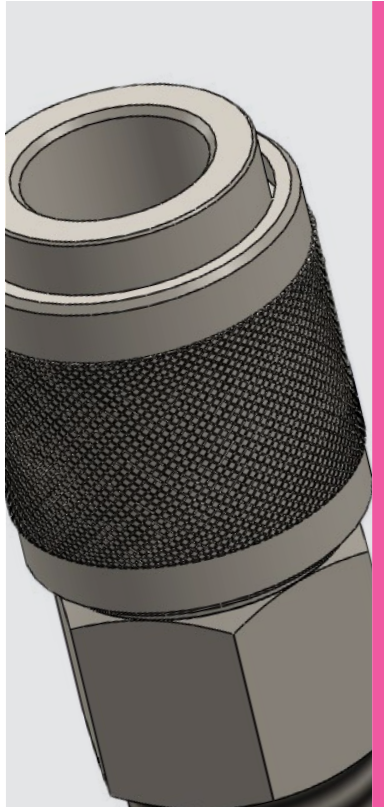


p. 447 / **8980RE**



p. 447 / **PCP**






 -15°C ÷ +80°C

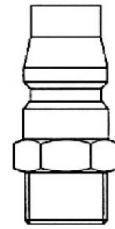
 From 0 to 16 Bar

NOMINAL DIAMETER
7,5 mm

 Compressed air

 Parallel gas from G1/4" to G1/2"

PROFILE

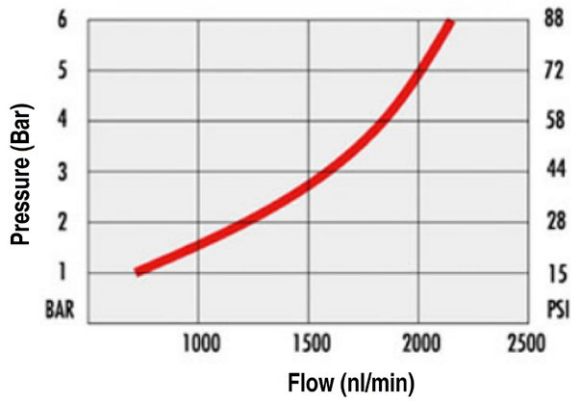


Products in compliance with the directive 2002/95/EC

RoHS2

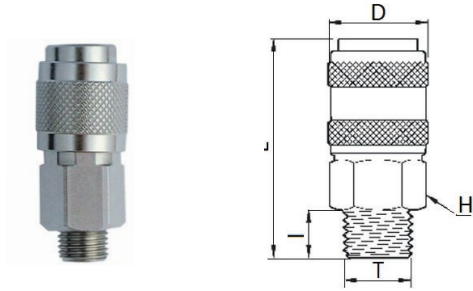
Products in compliance with the directive 2011/65/EU

TIERRE JAPAN SERIES



8910FM

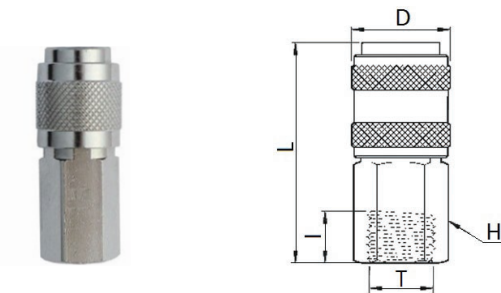
Male quick coupler



CODE	T	I	D	L	H
8910FM02	G1/4"	11,0	24,0	56,5	20
8910FM03	G3/8"	11,5	24,0	53,0	20
8910FM04	G1/2"	14,0	24,0	55,0	22

8920FF

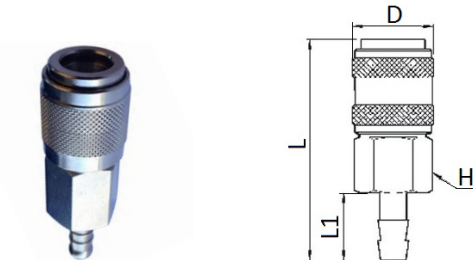
Female quick coupler



CODE	T	I	D	L	H
8920FF02	G1/4"	11,0	24,0	54,0	20
8920FF03	G3/8"	12,0	24,0	54,0	20

8930RE

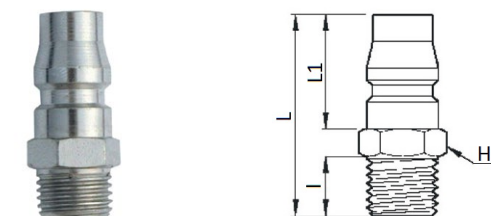
Hose connector quick coupler



CODE	Ø	D	L1	L	H
8930RE06	6	24,0	20,0	65,5	20
8930RE08	8	24,0	20,0	65,5	20
8930RE10	10	24,0	20,0	65,5	20

8960MM

Male connection

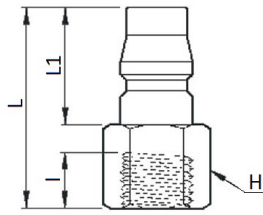


CODE	T	I	L	L1	H
8960MM02	G1/4"	11,0	37,0	21,0	14
8960MM03	G3/8"	11,5	37,5	21,0	17
8960MM04	G1/2"	14,0	40,5	21,0	22



8970FM

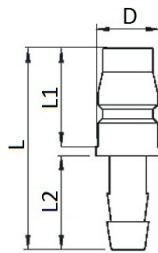
Female connection



CODE	T	I	L	L1	H
8970FM02	G1/4"	12,0	36,0	21,0	17
8970FM03	G3/8"	13,0	37,0	21,0	19

8980RE

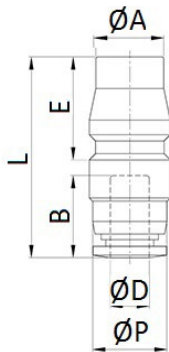
Connector with barb connector



CODE	Ø	D	L	L1	L2
8980RE06	6	20,0	43,0	14,0	21,0
8980RE08	8	20,0	43,0	14,0	21,0
8980RE10	10	20,0	43,0	14,0	21,0

PCP

Push-in fittings for tube



CODE	ØD	ØP	ØA	L	E	B	DN	GR.
PCP04N	4	10,0	10,9	31,0	16,3	14,8	3,0	17,0
PCP06N	6	11,9	10,9	31,7	16,3	17,4	5,0	16,0
PCP08N	8	14,0	10,9	34,9	16,3	18,4	6,0	17,0
PCP10N	10	16,0	10,9	42,4	16,3	19,7	8,0	25,0
PCP12N	12	19,0	10,9	45,4	16,3	21,9	8,0	33,0
PCP16N	16	24,0	10,9	49,3	16,3	24,5	8,0	52,0



